

SCANX 14 DIGITAL IMAGING SYSTEM

WHO WILL YOU TRUST WITH YOUR MOVE TO DIGITAL X-RAY?

With thousands of healthcare installations worldwide,
ALLPRO knows what you need.



 **ALLPRO** IMAGING
THE IMAGING EXPERTS

PRESENTING SCANX® 14

SCANX 14 IS AN INNOVATION IN DIGITAL IMAGING SYSTEMS, ENGINEERED TO RAPIDLY PRODUCE DIAGNOSTIC QUALITY IMAGES THAT ARE READY FOR VIEWING IN JUST 55 SECONDS.

X-Rays are an essential part of your practice. They require a substantial investment of your time, space and money. Finally, ScanX technology has delivered **the ideal solution** for your office.

SCANX 14 STREAMLINES THE ENTIRE IMAGING PROCESS

Here's How It Works.

ScanX 14 is a computed radiography system (CR). Replacing film and intensifying screens, CR utilizes phosphor storage plates (PSP) which are coated with an x-ray sensitive phosphor material. PSP's are durable and reusable thousands of times. Upon exposure to x-rays, the plate stores a latent image which is scanned by ScanX 14. Easy to use, certified imaging software enhances the digital image to aid you in diagnosis. Save images to your computer for easy retrieval and huge space savings in your office.



PSPs are available in 8" x 10", 10" x 12" and 14" x 17" sizes and can be used with standard cassettes (without intensifying screens).

....Plus It Works the Way you Work.

Use your existing x-ray equipment to expose the plate, the same way you expose film. Simply insert the plate into ScanX 14 and in a mere 55 seconds the image is ready for viewing.

Your workflow remains the same.
Simply expose a reusable plate instead of film.



SWITCHING TO DIGITAL PROMPTS IMPORTANT QUESTIONS:

- **Will the results be diagnostic quality?**

Unlike film, which is a static image, digital imaging allows you to maximize the diagnostic information.

- **Will it disrupt my workflow?**

No. Simply replace your film with any of our PSP plates.

- **I need the benefits of ScanX NOW. Are there any reasons I should wait?**

No. ScanX utilizes computed radiography, an advanced technology. Costs have remained steady and savings will be experienced immediately.

- **Where will I get help?**

ALLPRO Imaging products are sold, installed and supported by our long-established, highly trained, authorized dealer network.

**FOR THOUSANDS OF HEALTHCARE PROFESSIONALS,
SCANX DELIVERED THE RIGHT ANSWERS.**

THE FAST, AFFORDABLE, VERSATILE SYSTEM THAT'S JUST RIGHT FOR YOU

IMAGINE THE TIME, EFFICIENCY AND CONVENIENCE YOU'LL ADD TO EACH DAY

- Never again deal with film, chemistry, processor maintenance or duplicating film. No need for a darkroom...ScanX 14 operates in normal room light.
- Acquire images, accurate the first time.
- Enhance images with included imaging software to maximize the diagnostic information.
- Educate patients; quickly and thoroughly present treatment plans.
- ScanX technology saves you time and space with easy digital file storage and archiving. Retrieve and review patient x-rays; send to a colleague or burn to a CD.
- Radiographic technique is consistent with green sensitive film. Users of blue sensitive film can reduce exposure by over 50%.

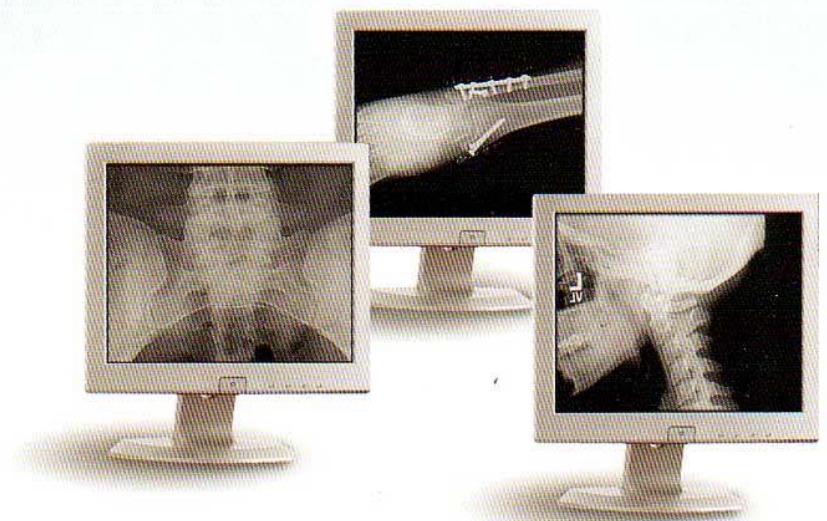
ENGINEERED AND MANUFACTURED IN THE U.S.A.

ALLPRO Imaging is a manufacturer of digital imaging systems and film processors for the healthcare profession.

As a division of Air Techniques, ALLPRO Imaging offers a heritage of forty-two years of leadership in the medical and dental industries.

WHAT DOES FILM ACTUALLY COST YOU?

		8 FILMS/DAY	16 FILMS/DAY
PER FILM COSTS:			
Film (14"x17")	\$ 1.50	\$ 12.00	\$ 24.00
Chemistry (Replenisher)	\$.50	\$ 4.00	\$ 8.00
Envelope	\$.25	\$ 1.00	\$ 2.00
Total Per Film Costs		\$17.00	\$34.00
250 days/ year		\$4,250.00	\$8,500.00
Add 15% for duplicating and retakes		\$4,887.50	\$9,775.00
MONTHLY COSTS:			
Chemistry	\$25.00		
Processor Cleaning Labor	\$60.00		
Waste Disposal	\$50.00		
	\$135.00		
12 months/year		\$ 1,620.00	\$1,620.00
YEARLY COSTS:			
Darkroom & Film Storage (10'x10')	\$2,000.00		
Processor Repair	\$250.00		
	\$2,250.00	\$2,250.00	\$2,250.00
Total Yearly Cost of Film Processing		\$8,757.50	\$13,645.00



LE DIGITAL IMAGING THE PRIVATE PRACTICE.

MORE ACCURATE DIAGNOSES, MORE EASILY DETERMINED AND COMMUNICATED.

- View both skeletal and soft tissue with one exposure.
- Images can be magnified, inverted and sharpened.
- Window level and change brightness and contrast.
- Measurements may be made using line segment and angle measurement tools.
- An enhanced image helps you to educate patients and to visualize your treatment plans.
- Optional tools enable you to maintain notes and images in one file, to annotate image files and to DICOM print.

HOW TO GET UP AND RUNNING

ScanX 14 is sold, installed and serviced through ALLPRO Imaging's long standing nationwide network of authorized dealers. Consult with your local dealer representative for details on a complete ScanX system that will meet your needs. To locate your authorized dealer, call direct: **800.247.8324 ext 5611.**



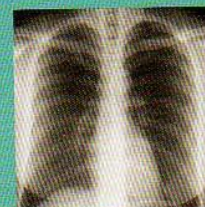
ScanX 14 is designed, sized, and priced just right. Plug & Play set-up. Simple operation. Software specifically designed for medical imaging.



1. Take an x-ray as you normally do, using a reusable phosphor plate in place of film.



2. Easily feed plate into the ScanX 14.



3. Have the image available in 55 seconds for viewing.



4. Enhance the image to optimize detail for diagnosis and consulting.



5. Save the image to your computer and easily share images via the internet or burn a CD.

 **ALLPRO IMAGING**
THE IMAGING EXPERTS

SCANX® 14



SPECIFICATIONS

Dimensions	22" D x 24" W x 64" H
Weight:	120 lbs.
Electrical:	115V, 60 Hz
Imaging Media:	Phosphor Storage Plates 14"x17", 10"x12", 8"x10"
Laser Classification:	Class 1 Laser Product, Compliance with FDA HHS 21, CFR 1040.10 and IEC 60825-1
System includes:	2 each, 14" x 17" cassettes, Plates & Plate Protectors, 110" x 12" cassette, Plate, and Plate Protector
Software:	Software included

SCANX 14 IN-COUNTER UNIT

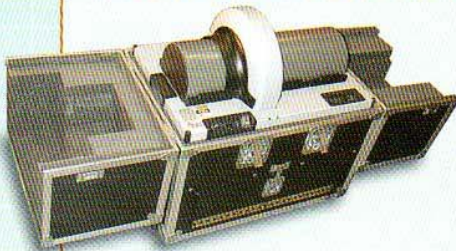


Counter is
not included.

SPECIFICATIONS

Dimensions:	18 1/4" D x 28 1/4" W x H (above counter 10" / below counter 4 3/16")
Weight:	43 lbs.
Electrical:	100-240 VAC
Imaging Media:	Phosphor Storage Plates Sizes 0, 1, 2, 3, 4
Laser Classification:	Class 1 Laser Product, Compliance with FDA HHS 21, CFR 1040.10 and IEC 60825-1
System includes:	2 each, 14" x 17" cassettes, Plates & Plate Protectors, 1 each 10" x 12" cassette, Plate, and Plate Protector, Eraser (14" x 17")
Software:	Software Included

SCANX 14 PORTABLE JUST RIGHT FOR THE ROAD



SPECIFICATIONS

Dimensions (open case)	61" W x 20" D x 27" H
Dimensions (storage):	31" W x 20" D x 28.5" H
Weight:	113 lbs. (in case)
Electrical:	115V, 60 Hz
Imaging Media:	Phosphor Storage Plates 14"x17", 10"x12", 8"x10"
Laser Classification:	Class 1 Laser Product Compliance with FDA HHS 21, CFR 1040.10 and IEC 60825-1
System includes:	2 each, 14" x 17" cassettes, Plates & Plate Protectors, 1 each 10" x 12" cassette, Plate, and Plate Protector, Eraser (14" x 17"), DC to AC inverter, carrying case
Software:	Software included

ERASER



SPECIFICATIONS

Dimensions:	23.44" D x 17.66" W x 5.8" H
Weight:	45 lbs.
Electrical:	115V, 60 Hz
Erasing Surface Area:	14" x 17"
Phosphor Plate Capacity:	All sizes up to 14" x 17" PSPs
Bulb Rating:	6 fluorescent 55 Watt bulbs

COMPUTER SYSTEM REQUIREMENTS/ RECOMMENDATIONS

CPU Speed:	2.8 GHz Pentium 4 Windows 2000 Service Pack 4 or XP Pro Service Pack 1a or later
RAM:	1 GB
Hard Drive:	120 GB
CD ROM Drive:	48X
Monitor:	2 MP 20.1" Glass Monochrome LCD or SVGA Monitor (1024x786 resolution)
Video:	32 MB Ram
Keyboard, Mouse:	Standard
Backup Device:	Recommended for daily saving
External Surge Protector:	Recommended
USB Port:	Must be USB 1.1 or higher
Printer:	Optional

 **ALLPRO IMAGING**
THE IMAGING EXPERTS
www.allproimaging.com

Contact your authorized ALLPRO Imaging dealer or call direct: 800.247.8324 ext 5611.
70 Cantiague Rock Road, P.O. Box 870, Hicksville, New York 11802 • 516.433.7676 • Fax 516.433.7683